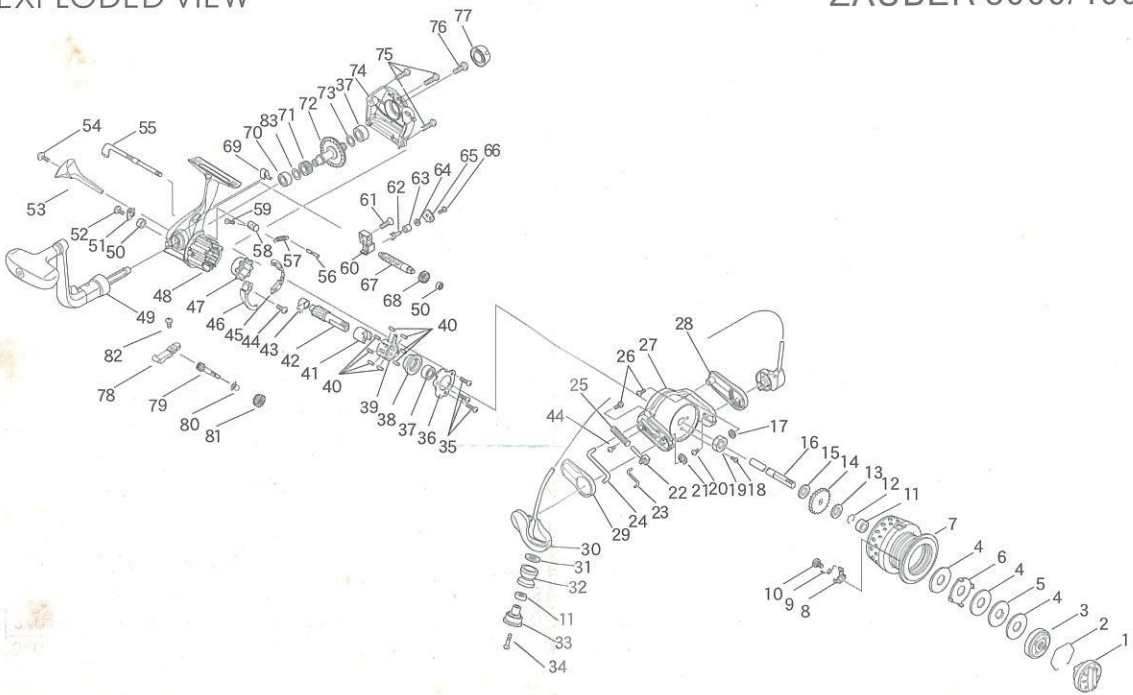


EXPLODED VIEW

ZAUBER 3000/4000



PARTS LIST

NO.	PARTS NO.	PARTS NAME	NO.	PARTS NO.	PARTS NAME	NO.	PARTS NO.	PARTS NAME
1	0232198A	DRAG KNOB ASSY.	28	41536	COVER B(3000)	57	67107	ONE WAY CLUTCH SPRING
2	42081	STOPPER SPRING		41541	COVER B(4000)	58	14353	ANTI-REVERSE CAM
3	0268514A	CLICK PLATE ASSY.	29	41535	COVER A(3000)	59	20632	SCREW
4	26440	DRAG WASHER		41540	COVER A(4000)	60	11160	OSCILLATOR
5	26437	DRAG WASHER	30	0229361A	BAIL ARM ASSY.(3000)	61	20383A	SCREW
6	26438	DRAG WASHER		0229365A	BAIL ARM ASSY.(4000)	62	33318	CLAW
7	0206597	SPOOL ASSY.(3000)	31	27704	WASHER	63	17407	COLLAR
	0206598	SPOOL ASSY.(4000)	32	25096A	ROLLER	64	27715	WASHER
8	33327	CLICK CLAW	33	68518	ROLLER HOLDER	65	30167	PRESSURE PLATE
9	67108	CLICK CLAW SPRING	34	21163	SCREW	66	20648	SCREW
10	21157	CLICK CLAW SCREW	35	20610	SCREW	67	14354	TRAVERSE CAM(3000)
11	38248	BALL BEARING	36	30162	BEARING SUPPORT		14361	TRAVERSE CAM(4000)
12	42077	STOPPER RING	37	38049	BALL BEARING	68	10479	NO.4 GEAR
13	27453B	CLICK WASHER	38	17435	BALL BEARING COLLAR	69	67117	ANTI-REVERSE SPRING
14	13119	CLICK	39	68517	HOLDER	70	38059	BALL BEARING
15	27694	SPOOL WASHER	40	25089	ROLLER	71	10492	NO.1 GEAR
16	34036	SHAFT(3000)	41	17413	INNER RING	72	08283	MAIN GEAR
	34047	SHAFT(4000)	42	09333	PINION GEAR	73	27290A	WASHER
17	27723	WASHER(3000)	43	16359	BUSH	74	04506	SIDE PLATE
	27688	WASHER(4000)	44	20637	SCREW	75	20559	SCREW
18	20635	SCREW	45	49056	CONTROL PLATE	76	21146	HANDLE SCREW
19	18081	HEXAGON NUT	46	68524	KICK CAM	77	0219488A	HANDLE CAP ASSY.
20	20634	SCREW	47	68449	OUTER RING	78	68515	SUPPORT
21	42021	STOPPER RING	48	0203361A	MAIN BODY ASSY.	79	10484	NO.2 GEAR
22	68513	SLIDER	49	0207380E	HANDLE ASSY.	80	16360	BUSH
23	68519	LINK	50	38245	BALL BEARING	81	10478	NO.3 GEAR
24	15687	KICK LEVER(3000)	51	30165	SUPPORT	82	20639	SCREW
	15692	KICK LEVER(4000)	52	20638	SCREW	83	27365	WASHER
25	67145	DEAD POINT SPRING	53	41534	PROTECTOR			
26	20400	SCREW	54	20634A	SCREW			
27	05263B	ROTOR(3000)	55	15684B	ANTI-REVERSE LEVER			
	05264B	ROTOR(4000)	56	23349	SPRING PIN			

SPECIFICATIONS

Model Name	Gear Ratio	Drag Power (Max.)	Weight	Ball Bearing	Line Capacity		
ZAUBER 3000	5.0:1	5.0kg	305g	8	0.235mm-200m	0.285mm-150m	0.330mm-100m
ZAUBER 4000	5.0:1	5.0kg	315g	8	0.285mm-200m	0.330mm-150m	0.370mm-110m

DESIGNED AND ENGINEERED IN JAPAN