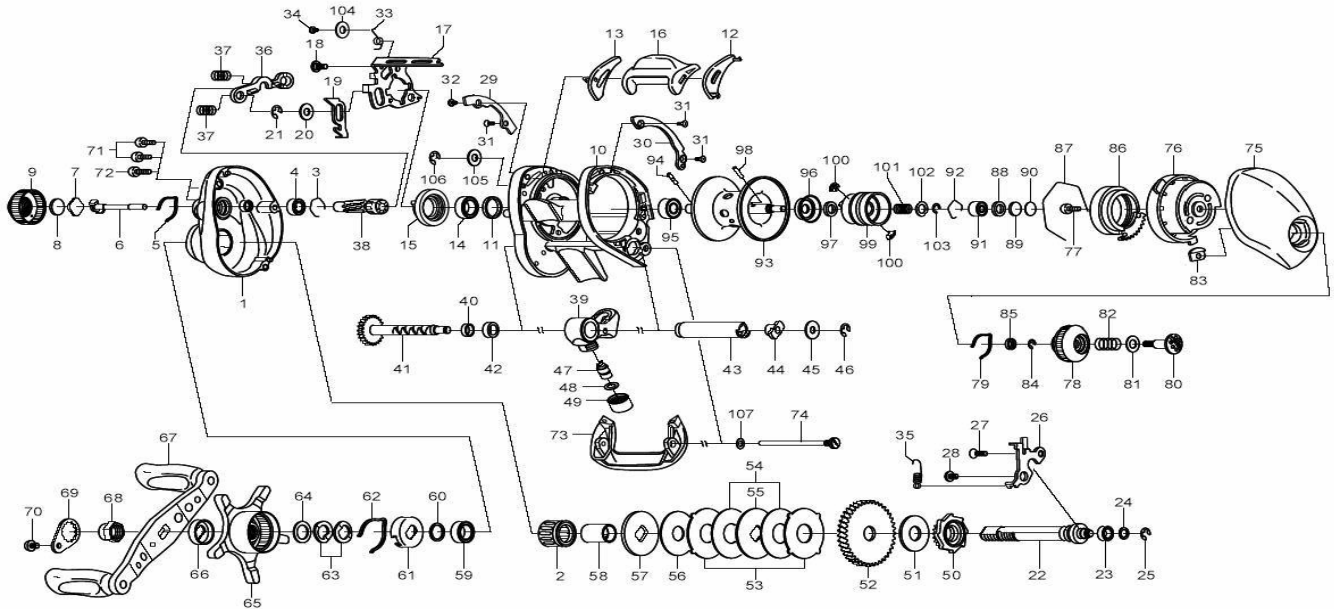


Please order by parts number, not key number  
 Veuillez indiquer le numéro de la pièce.



# TEAM DAIWA ZILLION 100SHSLA



Key No.	Parts No.	Parts Name	Key No.	Parts No.	Parts Name
1	H20-7301	Left side plate	50	G80-2201	Clutch wheel
2	G81-9801	Roller clutch	51	G86-3501	Drive shaft washer
3	B42-1601	Bearing retainer (A)	52	H20-7601	Drive gear
4	G53-8001	Ball bearing (A)	53	G79-1301	Eared washer
5	G89-4401	Click leaf spring (A)	54	G79-1402	Drag washer (A)
6	F74-4101	Pinion shaft	55	F90-4902	Key washer (A)
7	B17-5401	Spacer (A)	56	H11-8401	Drag washer (B)
8	B17-5503	Spacer (B)	57	G35-8501	Key washer (B)
9	F83-3909	Cast control cap	58	G01-1401	Gear shaft collar
10	H20-7401	Frame assembly	59	G43-1001	Ball bearing (E)
11	F83-4701	Collar	60	B55-3801	Bearing washer
12	G26-0702	Spacer (C)	61	F02-8201	Click leaf spring holder
13	G26-0802	Spacer (D)	62	F03-2401	Click leaf spring (B)
14	G43-1002	Ball bearing (B)	63	150-8901	Drag spring washer
15	F99-7401	Clutch cam	64	373-7810	Spacing sleeve
16	G26-0902	Clutch lever	65	H02-6502	Star drag
17	G80-1701	Clutch cam plate	66	F85-0402	Handle collar
18	G00-9701	Clutch cam screw	67	H20-6801	Handle assembly
19	G80-1801	Clutch trip plate	68	G79-3304	Handle nut
20	371-6900	Washer (A)	69	040-3206	Handle nut plate
21	320-1402	Retainer (A)	70	353-8301	Handle nut plate screw
22	G79-0202	Drive shaft	71	G04-0805	Left side plate screw (A)
23	G46-6201	Ball bearing (C)	72	G04-0801	Left side plate screw (B)
24	G75-5200	Washer (B)	73	G26-1504	Front plate
25	320-5901	Retainer (B)	74	G01-1702	Stabilizer bar
26	G80-1901	Drive shaft retainer	75	G26-1615	Right side plate
27	E13-4503	Drive shaft retainer screw (A)	76	G26-1802	Right set plate
28	G85-0401	Drive shaft retainer screw (B)	77	351-0906	Right set plate screw
29	G79-4114	Plate (A)	78	F57-7802	Brake adjusting knob
30	G79-5714	Plate (B)	79	F05-1701	Brake click spring
31	G31-8503	Screw (A)	80	G79-3501	Set plate screw
32	G61-1501	Screw (B)	81	G79-3602	Washer (C)
33	G80-2001	Clutch cam spring	82	E16-7101	Set plate spring
34	F50-5701	Screw (C)	83	F61-3401	Brake dial retainer (A)
35	G79-0501	Clutch trip plate spring	84	B33-9801	Brake dial retainer (B)
36	F99-8201	Yoke	85	F63-7701	Brake dial washer
37	G85-0301	Yoke spring	86	F71-7702	Magnet holder
38	H20-7501	Pinion gear	87	B54-3201	Magnet holder retainer
39	G41-0301	Line guide	88	F57-4303	Spacer (E)
40	G01-0701	Worm shaft holder (A)	89	375-7411	Spacer (F)
41	G79-0701	Worm shaft assembly	90	375-7400	Spacer (G)
42	G46-6201	Ball bearing (D)	91	G43-1101	Ball bearing (F)
43	F83-6502	Level wind guard	92	E21-9701	Bearing retainer (B)
44	B71-5601	Worm shaft holder (B)	93-103	Z01-8939	Spool assembly
45	F65-5500	Worm shaft washer	104	F44-0201	Washer (D)
46	320-5901	Warm shaft retainer	105	G85-0701	Washer (E)
47	121-4212	Line guide pawl	106	320-5901	Retainer (C)
48	373-1300	Line guide washer	107	G68-4801	Washer (F)
49	342-4807	Pawl cap			