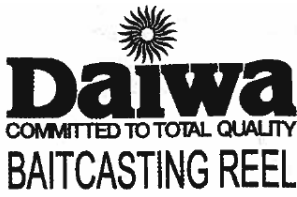
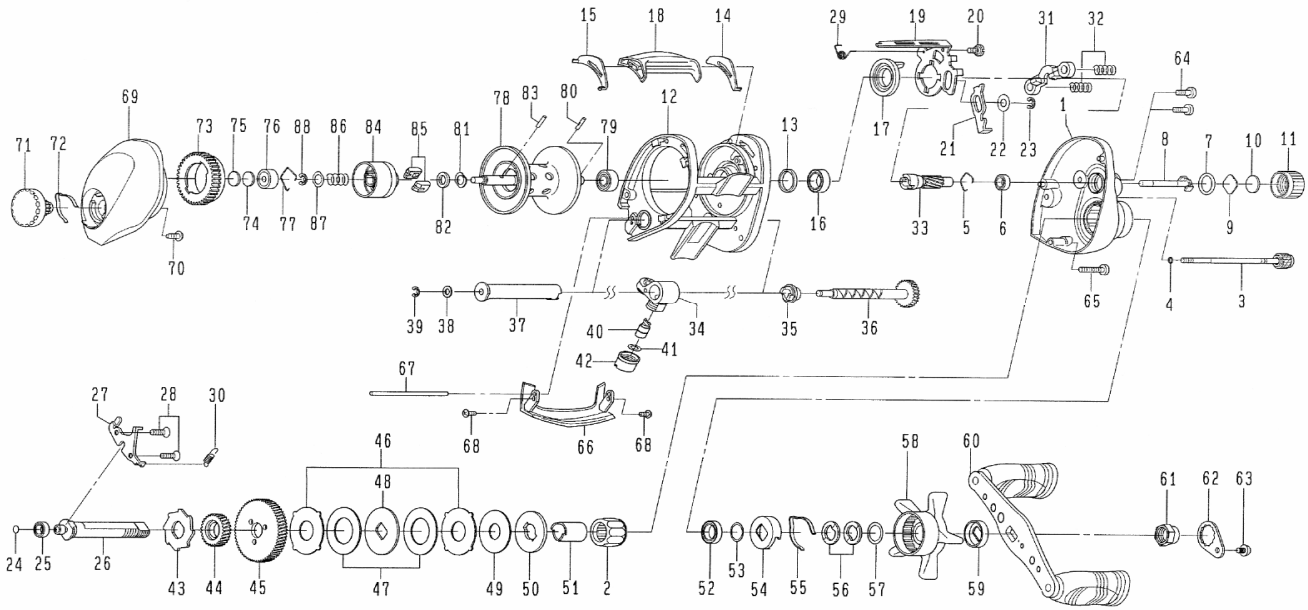


Please order by parts number, not key number
 Veuillez indiquer le numéro de la pièce.



TEAM DAIWA TIERRA 153H



| Key No. | Parts No. | Parts Name | Key No. | Parts No. | Parts Name |
|---------|-----------|----------------------------|---------|-----------|----------------------------|
| 1 | G54-2712 | Right side plate | 40 | 121-4212 | Line guide pawl |
| 2 | G81-9801 | Roller clutch | 41 | 373-1300 | Line guide washer |
| 3 | G71-8402 | Right side plate screw (A) | 42 | F40-2801 | Pawl cap |
| 4 | B85-3101 | "O" ring (A) | 43 | F76-1701 | Clutch wheel |
| 5 | E21-9701 | Bearing retainer (A) | 44 | G00-1501 | Drive gear (A) |
| 6 | G46-6202 | Ball bearing (A) | 45 | G54-4901 | Drive gear (B) |
| 7 | 171-5201 | "O" ring (B) | 46 | F79-6101 | Eared washer |
| 8 | F80-0501 | Pinion shaft | 47 | G42-8501 | Drag washer (A) |
| 9 | B17-5401 | Spool adjusting cap metal | 48 | F79-6301 | Key washer (A) |
| 10 | B17-5503 | Spacer (A) | 49 | G45-5801 | Drag washer (B) |
| 11 | F57-4414 | Cast control cap | 50 | G14-1801 | Key washer (B) |
| 12 | G54-3009 | Frame assembly | 51 | G54-5001 | Gear shaft collar |
| 13 | F83-4701 | Clutch cam washer | 52 | F58-2501 | Ball bearing (D) |
| 14 | G54-3401 | Spacer (B) | 53 | B55-3801 | Bearing washer |
| 15 | G54-3501 | Spacer (C) | 54 | F02-8201 | Click leaf spring holder |
| 16 | B86-1701 | Ball bearing (B) | 55 | F03-2401 | Click leaf spring |
| 17 | F79-3501 | Clutch cam (A) | 56 | 150-8901 | Drag spring washer |
| 18 | G87-4501 | Clutch lever | 57 | 373-7810 | Spacing sleeve |
| 19 | G54-3701 | Clutch cam (B) | 58 | F57-6501 | Star drag |
| 20 | G00-9701 | Clutch cam screw | 59 | F85-0401 | Handle collar |
| 21 | G54-3801 | Clutch trip plate | 60 | G87-9901 | Handle assembly |
| 22 | 371-6905 | Washer | 61 | G79-3301 | Handle nut |
| 23 | 320-1402 | Retainer | 62 | 040-3207 | Handle nut plate |
| 24 | G35-7506 | Drive shaft washer | 63 | 353-8301 | Handle nut screw |
| 25 | F05-5601 | Ball bearing (C) | 64 | G04-0801 | Right side plate screw (B) |
| 26 | G87-7201 | Drive shaft | 65 | G47-3501 | Right side plate screw (C) |
| 27 | G54-4001 | Drive shaft retainer | 66 | G54-5308 | Front plate |
| 28 | E13-4508 | Drive shaft retainer screw | 67 | G54-5401 | Stabilizer bar |
| 29 | G54-4101 | Clutch cam spring | 68 | B36-0401 | Front plate screw |
| 30 | G01-0201 | Clutch trip plate spring | 69 | G54-5508 | Left side plate |
| 31 | F79-4801 | Yoke | 70 | F21-2201 | Set plate screw |
| 32 | G59-7301 | Yoke spring | 71 | F82-1215 | Brake adjusting knob |
| 33 | G54-4201 | Pinion gear | 72 | F05-1701 | Brake click spring |
| 34 | G54-4301 | Line guide | 73 | G54-5701 | Magnet holder |
| 35 | G12-8201 | Worm shaft holder | 74 | 375-7411 | Spacer (D) |
| 36 | G54-4601 | Worm shaft assembly | 75 | 375-7404 | Spacer (E) |
| 37 | G54-4801 | Level wind guard | 76 | 637-4601 | Ball bearing (F) |
| 38 | 373-1306 | Worm shaft washer | 77 | F03-2201 | Bearing retainer (B) |
| 39 | 320-5901 | Worm shaft retainer | 78-88 | G54-6102 | Spool assembly |