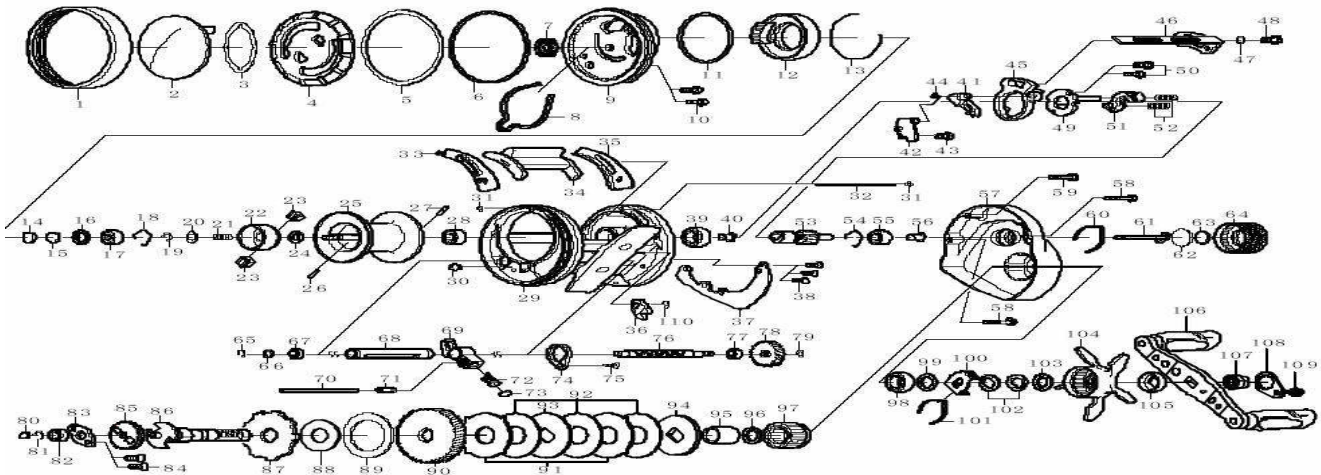


Please order by parts number, not key number  
 Veuillez indiquer le numéro de la pièce.

**Daiwa**  
 COMMITTED TO TOTAL QUALITY  
 BAITCASTING REEL

# TDPLUTON 200H



Key No.	Parts No.	Parts Name	Key No.	Parts No.	Parts Name
1	H17-5703	Left side cover	60	H16-0901	Click leaf spring (B)
2	H17-6405	Cover	61	H15-9601	Pinion shaft
3	H25-6901	Washer (A)	62	H16-1001	Spacer (F)
4	H17-6002	Dial	63	B17-5503	Spacer (G)
5	H17-5901	Washer (B)	64	H16-5702	Cast control cap
6	H17-5801	Retainer (A)	65	320-5901	Worm shaft retainer (A)
7	H17-6201	Gear (A)	66	B41-1706	Worm shaft washer
8	H17-6101	Click leaf spring (A)	67	G46-9001	Ball bearing (D)
9	H17-5502	Left set plate	68	H15-9001	Level wind guard
10	G55-7101	Screw (A)	69	H16-6501	Line guide
11	H17-6501	"O" ring (A)	70	H16-8802	Stabilizer bar (B)
12	H17-6601	Magnet holder	71	H16-8701	Line guide collar
13	H17-7101	Magnet holder retainer	72	H16-8601	Line guide pawl
14	375-7404	Spacer (A)	73	G09-9800	Line guide washer
15	375-7411	Spacer (B)	74	H15-8101	Plate (B)
16	G18-5101	Spacer (C)	75	G15-9902	Screw (H)
17	G51-1506	Ball bearing (A)	76	H15-8301	Worm shaft
18	F03-2201	Bearing retainer (A)	77	G46-9001	Ball bearing (E)
19-28	Z01-9109	Spool assembly	78	H26-9101	Worm gear
29	H27-7201	Frame assembly	79	B33-9801	Worm shaft retainer (B)
30	H29-4101	Screw (B)	80	G09-9800	Washer (D)
31	B86-4101	Retainer (B)	81	320-8002	Retainer (C)
32	H16-5501	Stabilizer bar (A)	82	G53-8003	Ball bearing (F)
33	H16-1201	Spacer (D)	83	H15-6501	Plate (C)
34	H16-5602	Clutch lever	84	E13-4501	Screw (I)
35	H16-1101	Spacer (E)	85	H26-9201	Gear (B)
36	H27-0401	Stopper	86	H23-7501	Drive shaft
37	H27-0003	Plate (A)	87	H31-2501	Clutch wheel
38	G15-9902	Screw (C)	88	H26-5101	Drive shaft washer (A)
39	G52-3403	Ball bearing (B)	89	H15-6801	Drive shaft washer (B)
40	H26-6601	Collar (A)	90	H23-7701	Drive gear
41	H16-1301	Clutch trip lever	91	H22-7301	Eared washer
42	H16-6401	Clutch plate	92	H22-7101	Drag washer
43	H29-4101	Screw (D)	93	H22-7201	Key washer (A)
44	H15-9101	Clutch cam spring	94	H23-7801	Key washer (B)
45	H15-9901	Clutch cam	95	H15-7201	Gear shaft collar
46	H15-9801	Clutch cam plate (A)	96	373-7810	Bearing washer (A)
47	H15-9201	Washer (C)	97	F55-2703	Roller clutch
48	H15-9301	Screw (E)	98	G52-3403	Ball bearing (G)
49	H26-6701	Clutch cam plate (B)	99	373-7810	Bearing washer (B)
50	B03-2904	Screw (F)	100	H15-8801	Click leaf spring holder
51	H15-9701	Yoke	101	H15-8701	Click leaf spring (C)
52	H16-0401	Yoke spring	102	150-8901	Drag spring washer
53	H23-7601	Pinion gear	103	G69-4201	Washer (E)
54	H16-0801	Bearing retainer (B)	104	H23-8603	Star drag
55	F81-1804	Ball bearing (C)	105	F85-0403	Handle collar
56	H15-9501	Collar (B)	106	H23-8001	Handle assembly
57	H26-6905	Right side plate	107	G79-3301	Handle nut
58	G04-0817	Screw (F)	108	040-3201	Handle nut plate
59	G04-0802	Screw (G)	109	353-8301	Handle nut plate screw
			110	B33-9801	Retainer (D)