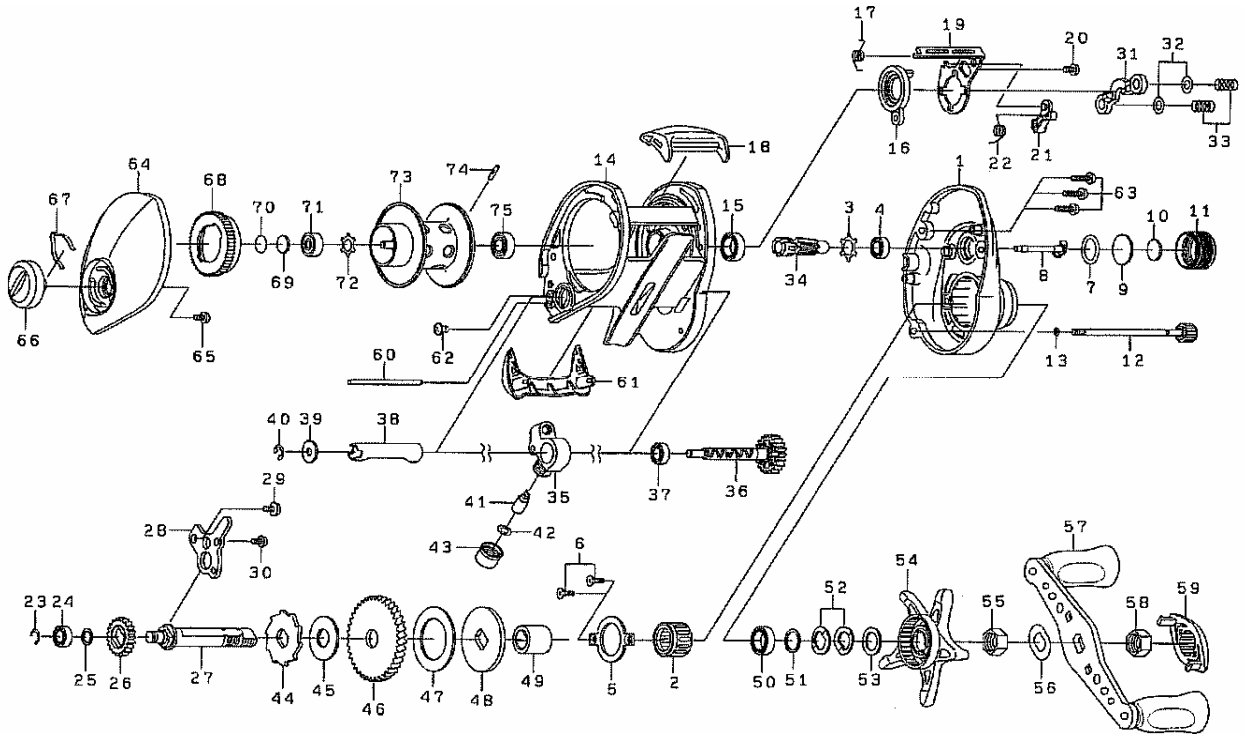


Please order by parts number, not key number
 Veuillez indiquer le numéro de la pièce.



STRIKEFORCE 100H



| Key No. | Parts No. | Parts Name | Key No. | Parts No. | Parts Name |
|---------|-----------|--------------------------------|---------|-----------|----------------------------|
| 1 | H00-0601 | Right side plate | 38 | G93-4201 | Level wind guard |
| 2 | G93-0501 | Roller clutch | 39 | F65-5501 | Worm shaft washer |
| 3 | H00-3101 | Bearing retainer (A) | 40 | 320-5901 | Worm shaft retainer |
| 4 | G05-1701 | Bearing (A) | 41 | F51-6501 | Line guide pawl |
| 5 | G93-0901 | Handle metal plate | 42 | 373-1300 | Line guide washer |
| 6 | G27-0701 | Handle metal plate screw | 43 | F40-2801 | Pawl cap |
| 7 | B05-5201 | "0" ring (A) | 44 | G93-4301 | Clutch wheel |
| 8 | G93-1001 | Pinion shaft | 45 | G93-4401 | Drive shaft washer |
| 9 | 375-7501 | Spool adjusting cap metal | 46 | H00-1901 | Drive gear (B) |
| 10 | B17-5503 | Spacer (A) | 47 | G93-4601 | Drag washer |
| 11 | G96-9802 | Cast control cap | 48 | G93-4701 | Key washer |
| 12 | G93-1101 | Right side plate screw (A) | 49 | G93-4801 | Gear shaft collar |
| 13 | B85-3101 | "0" ring (B) | 50 | B86-1704 | Ball bearing (A) |
| 14 | H00-0501 | Frame assembly | 51 | B55-3801 | Bearing washer |
| 15 | B86-1704 | Ball bearing (A) | 52 | 150-8901 | Drag spring washer |
| 16 | G93-1601 | Clutch cam (A) | 53 | 373-7810 | Spacing sleeve |
| 17 | G93-1701 | Clutch cam spring (A) | 54 | H00-2101 | Star drag |
| 18 | G93-1801 | Clutch lever | 55 | F84-9903 | Star drag nut |
| 19 | G93-1901 | Clutch cam (B) | 56 | 150-9001 | Friction washer |
| 20 | G19-3701 | Clutch cam screw | 57 | H00-2201 | Handle assembly |
| 21 | G93-2001 | Clutch trip lever | 58 | F84-9903 | Handle nut |
| 22 | G93-2101 | Clutch cam spring (B) | 59 | G96-9902 | Handle nut plate |
| 23 | 320-8002 | Retainer (A) | 60 | H00-2401 | Stabilizer bar |
| 24 | G05-1701 | Bearing (A) | 61 | H00-2501 | Front plate |
| 25 | E09-6501 | Washer (A) | 62 | G93-9301 | Front plate screw |
| 26 | G93-2201 | Drive gear (A) | 63 | F93-9701 | Right side plate screw (B) |
| 27 | G93-2301 | Drive shaft | 64 | H00-2601 | Left side plate |
| 28 | G93-2401 | Drive shaft retainer | 65 | F21-2201 | Set plate screw |
| 29 | G19-3701 | Drive shaft retainer screw (A) | 66 | G93-6202 | Brake adjusting knob |
| 30 | G17-1402 | Drive shaft retainer screw (B) | 67 | H08-4401 | Brake click spring |
| 31 | G93-3501 | Yoke | 68 | H02-9701 | Magnet holder |
| 32 | B41-1706 | Yoke washer | 69 | 375-7411 | Spacer (B) |
| 33 | G85-0301 | Yoke spring | 70 | 375-7404 | Spacer (C) |
| 34 | H00-1601 | Pinion gear | 71 | G51-1504 | Ball bearing (B) |
| 35 | H00-1701 | Line guide | 72 | G93-6301 | Bearing retainer (B) |
| 36 | G93-9901 | Worm shaft assembly | 73-75 | H00-2801 | Spool assembly |
| 37 | G05-1701 | Bearing (A) | | | |